

FAIB NEXUS

Market State Analyzer

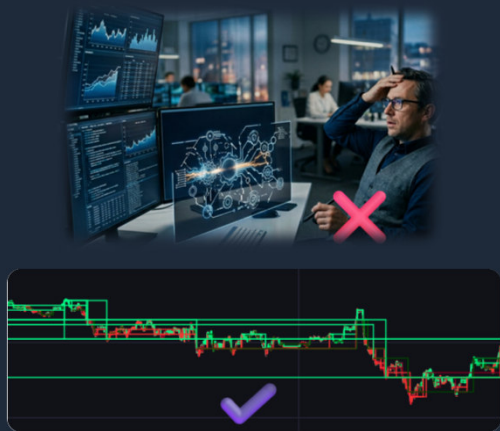
Fractal Market Structure — simultaneous, live, in real time , update tick by tick



The Problem

Too Much Data

Analysts have access to more data than ever before — but what is missing is a state description of the market as a system.



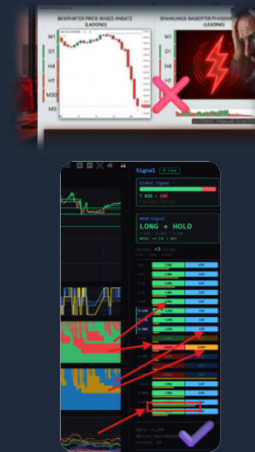
Only 3–7 Levels

MultiTimeframe tools show 3–7 time levels. Signals, directions — but no simultaneous structural depth.



Too Late

Phase transitions only become visible once the chart has already turned. The tension before it remains invisible.



What is missing: a simultaneous, living description of the state the market is currently in — across all levels at once.

What is FAIB NEXUS?

F

Fractal

Everything built fractally — each level emerges from the accumulation of tick movements

A

Analytical

A framework that enables both depth and overview at a single glance

I

Intuitive

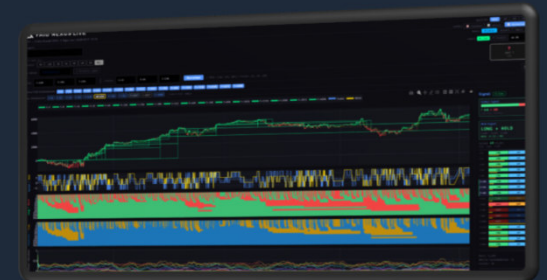
Through patterns and colors an inner physicist emerges — one glance is enough

B

Bias Observation System

A pure state system — does not predict, but allows states to be observed as a whole

Market State Analyzer

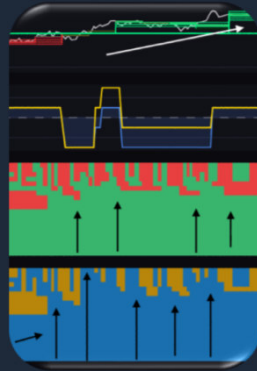


- No indicator toolkit
- No external signals
- Timestamp + Tick only
- States — not predictions

The Four Forces of the Market

LONG + EXPANSION

Strong uptrend
Direction and energy
both point upward



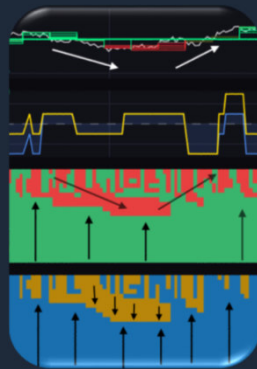
LONG + COMPRESSION

Upward but losing steam
Direction still up, energy
fading — caution



SHORT + EXPANSION

Downward pressure increasing
Direction and energy
both point downward



SHORT + COMPRESSION

Strong downtrend
compressing —
possible release ahead



Each of the 20 fractal levels is always simultaneously in one of these four states.

Analogy: The Slaving Principle

Masters (large fractals)

Dominate and set the framework — the staircase lines in the chart

Slaves (small fractals)

Move within the framework — probe the boundaries and respect them

Critical Fluctuation

When slaves intensely stress the master — phase transition intensity rises — a precursor to the break

Emergence

Dynamics are the key factor: slaves can overturn the dominant trend — BEFORE the chart turns

Concretely visible



Small levels: **SHORT**

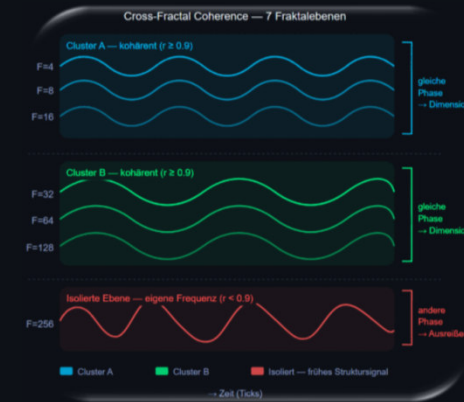
Large levels: **LONG**

→ NEXUS shows the conflict:
green above, red below

→ Signal: transition phase
structure becomes fragile

→ Classic chart
not yet showing it

Cross-Fractal Coherence — The Market's Hidden Structure



How it works

- Continuous Pearson correlation between all 20 fractal levels
- Levels with $r \geq 0.9$ oscillate together → form a Cluster (Dimension)
- Each Dimension has a representative — its structural center
- Levels oscillating alone = outliers = early structural signal

What it tells you

- Few clusters, all aligned → market acts as one block → strong clear trend
- Many isolated levels → order dissolving → complexity rising → caution
- Cluster fragmentation visible before price confirms the shift

In practice

- Typical trend day: 1–2 large clusters, high coherence, low conflict — clear, readable market
- Before a reversal: clusters split, small levels break away first — NEXUS shows the warning before the chart confirms it

Cross-Fractal Coherence does not measure what the market does — it measures how complex or simple it currently is. Visible at a glance.

Phase Transition Intensity — The Market's Seismograph

What it measures

- Intensity of state changes within each fractal level
- Accumulated strength of every up/down movement — the smallest analysable unit
- High intensity = many strong changes = market is fighting
- Low intensity = calm directional movement = trend running stable



Reading the signal

- Small fractals vibrating, large ones calm → short-term noise, no structural shift
- Large fractals vibrating → structural tension → relevant signal
- Intensity rises before phase transitions — the market fights before it turns

The key insight — Breakout or Support?

- A vibrating level in state transition is not noise — it is an early indicator
- Switches to Long + large levels already Long → confirmation → possible breakout upward
- Vibrates but large levels oppose → resistance, no breakout → support level
- Combined with Slaving + Coherence: full tension picture before the price confirms

Case Study — NQ Futures | March–April 2020

Signal used: Level State Panel only — Blue (Expansion) vs. Orange (Compression)

Chronology — Energy before Price

- 6 Mar — Blue (Expansion) fades on small levels → compression building → price still undecided
- 9–12 Mar — Orange dominates all levels → no upward energy → Circuit Breakers, -9% days
- 13 Mar — Maximum compression: deepest Orange zone of the period → maximum stored energy
- 19 Mar — First Blue returns on large levels → accumulation begins → price still falling
- 23–24 Mar — Blue clearly back → structural reversal confirmed → 23 Mar: absolute low
- 16 Apr — 32 days Orange → single day: complete collapse of compression → Fat Tail upward
- F=32768 broken upward → regime boundary crossed → market permanently above this level



The energy structure preceded the price — in both directions, symmetrically. Identifiable with one signal alone, before the price confirmed it.

What users Get from This

Live Regime Detection

Trend day, mean reversion, conflict mode — visible during the trading day, not only in backtest

Early Warning

Phase transition intensity rises before the chart turns — enabling informed decisions

20 Levels Simultaneously

From F=4 to F=32768 ticks — expandable at any time, universally applicable to any bipolar market

Execution-Independent

No interference with existing setups — runs as a radar screen alongside any existing platform

Cross-Fractal Coherence

Pearson correlation of all levels — shows when the market acts as a block or falls apart

New Layer of Analysis

A layer between raw price data and the decision — not previously available in the ecosystem

Demo & Next Step



Demo Access

URL: faibnexus.faraone-fractal-solutions.de

User: user

Pass: [provided separately]

Instant sandbox access with historical CSV data (MNQ) — no installation required.

What's Next?

- **Personal Live Presentation**

Contact me for a live session with a real-time data feed.

- **Explore the Sandbox**

Log in to test all analytical features using historical CSV data.

- **Watch Video Guides**

Visit the landing page to see the tool operating on live markets.

- **Partnership**

Explore together what is possible

Observation before signal.

Signal before interpretation.

Interpretation before decision.

Antonio Faraone | antonio.faraone@faraone-fractal-solutions.de | +49 173 3284944 (Mon–Fri, 09:00 – 13:00 CEST) | May 2026

Faraone Fractal Solutions | Demo Access: faibnexus.faraone-fractal-solutions.de